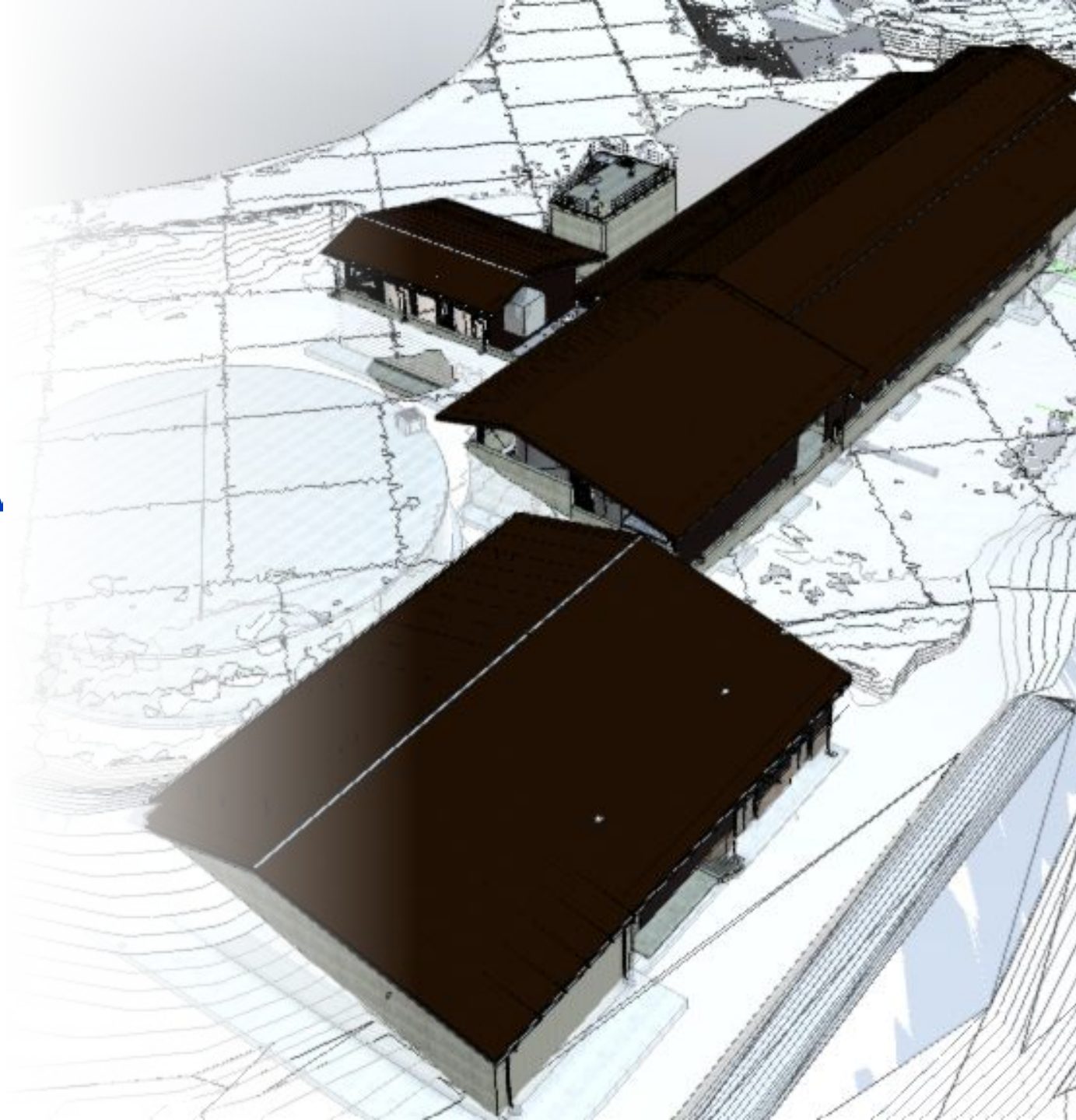




Project Overview

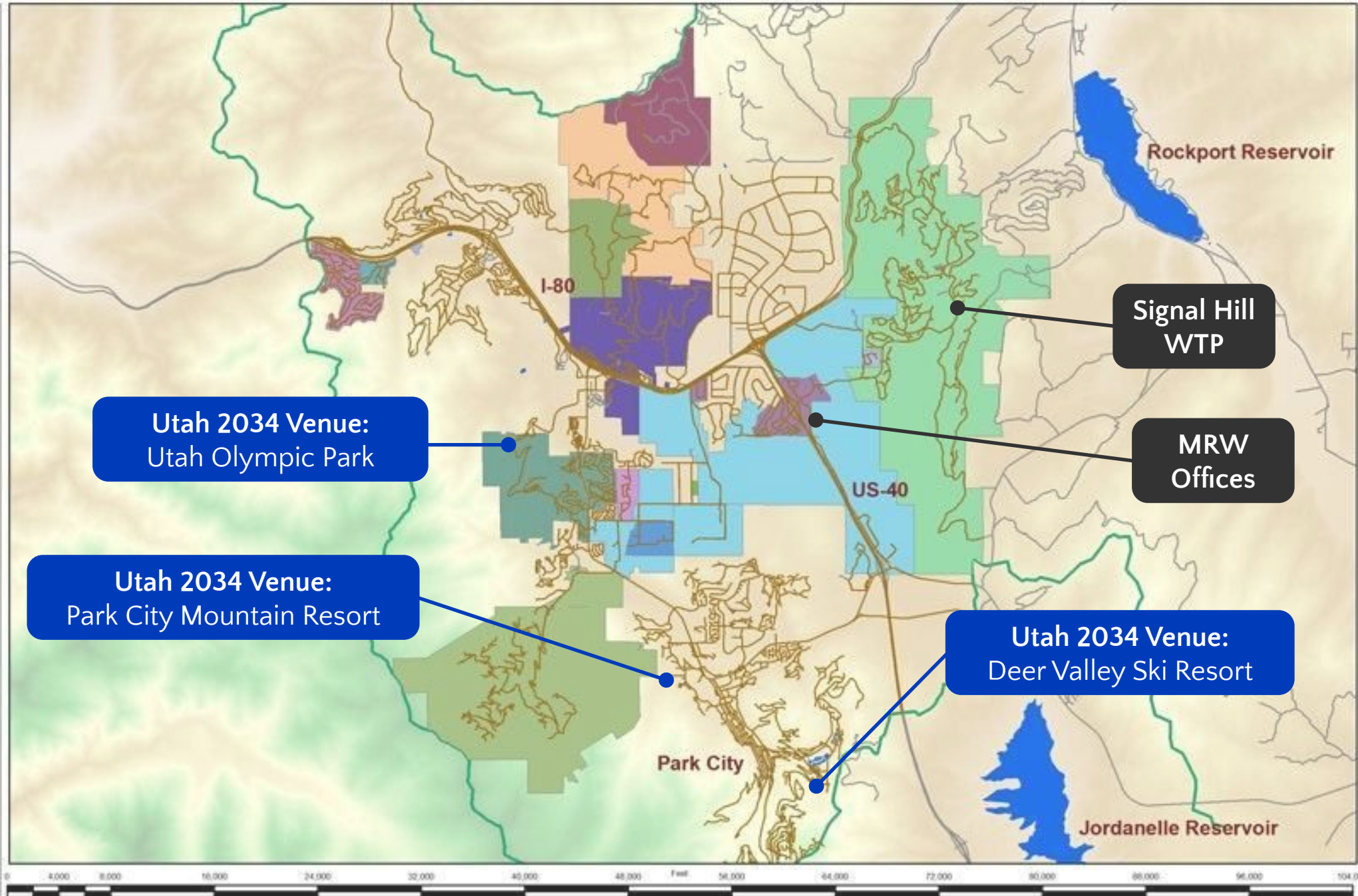
Signal Hill Water Treatment Plant Optimization Project

EPA Site Visit | Friday May 22, 2026



Legend

- Lakes
- Basin Roads
- County Roads
- County Boundary
- 300 West
- Atkinson - Original
- Old Ranch Road
- Preserve
- Promontory
- Quarry Mountain
- Red Hawk
- SCSC
- Silver Gate
- Silver Springs
- Stagecoach
- Summit Park
- The Colony
- Timberline
- Weilenmann School
- Willow Creek



Signal Hill WTP

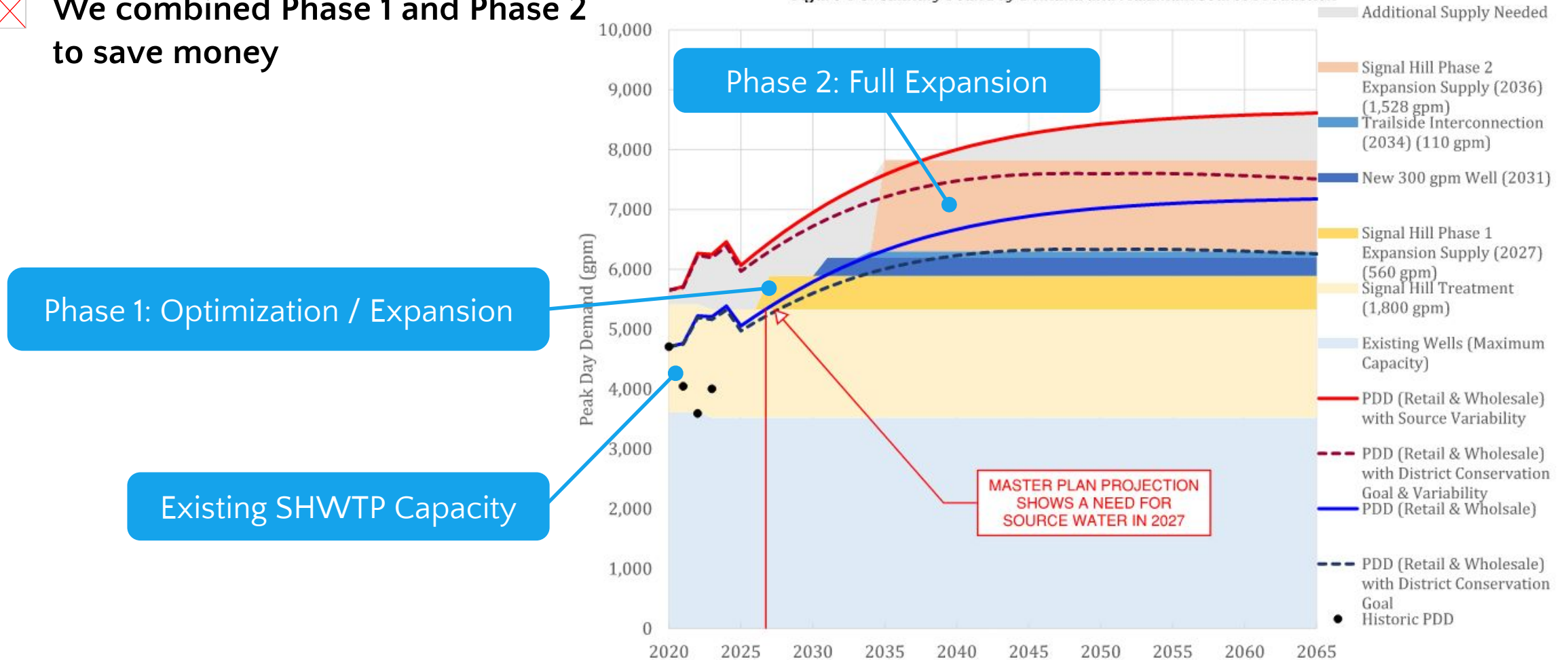
Located inside a gated
Residential community



Increasing demands is a primary driver

✘ We combined Phase 1 and Phase 2 to save money

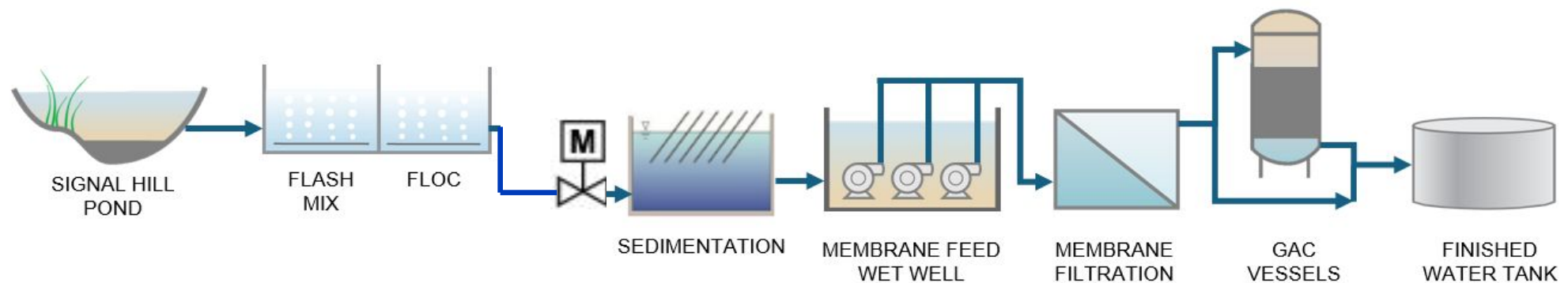
Figure 4-5: Culinary Peak Day Demand and Maximum Source Production



This is a complicated retrofit with three objectives

- Expand from 2.6 to 5.4 mgd to accommodate growth
- Address safety, process and operational challenges
- Improve water quality and resiliency against future water quality and regulations

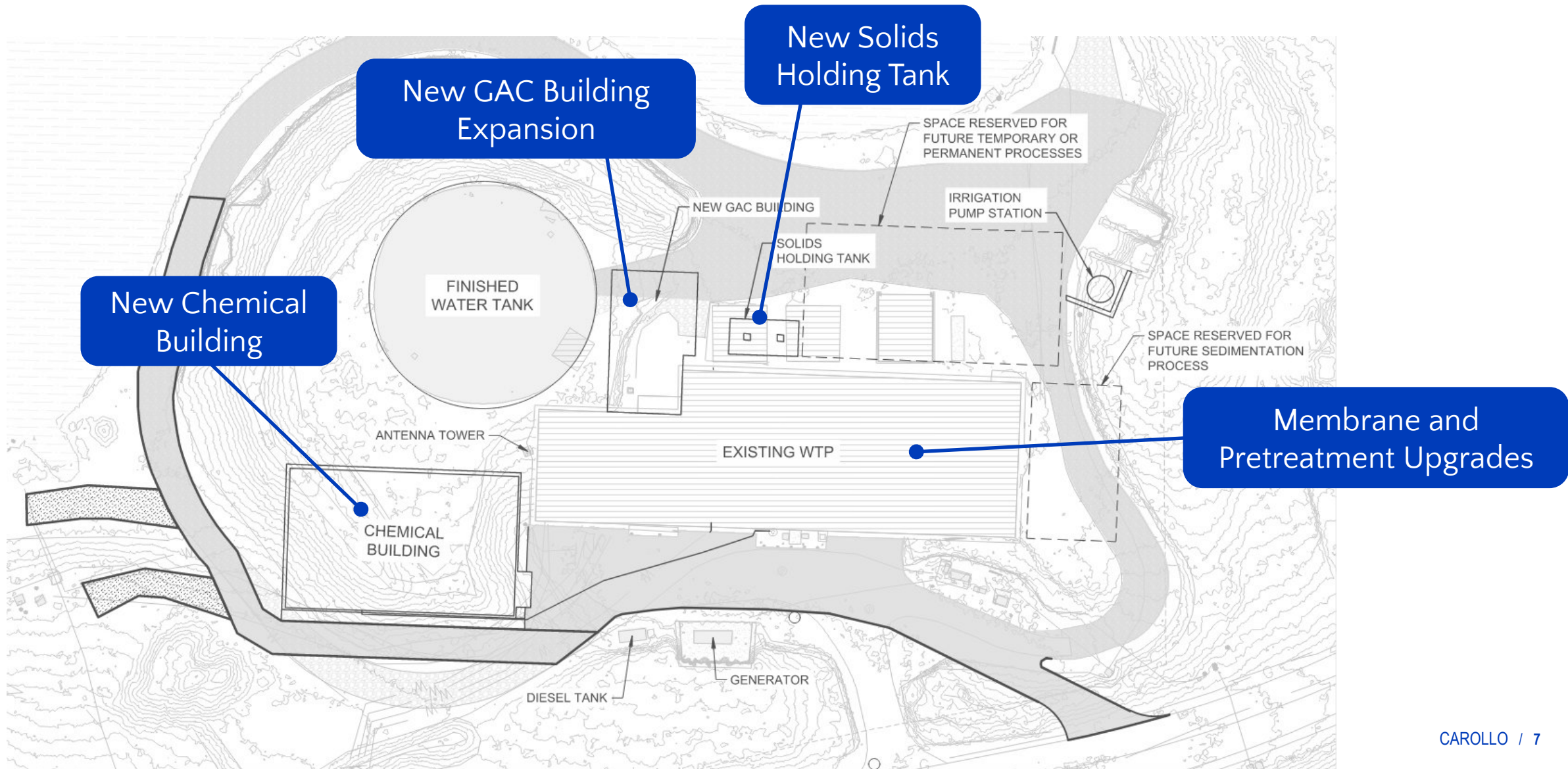
Existing Process Schematic



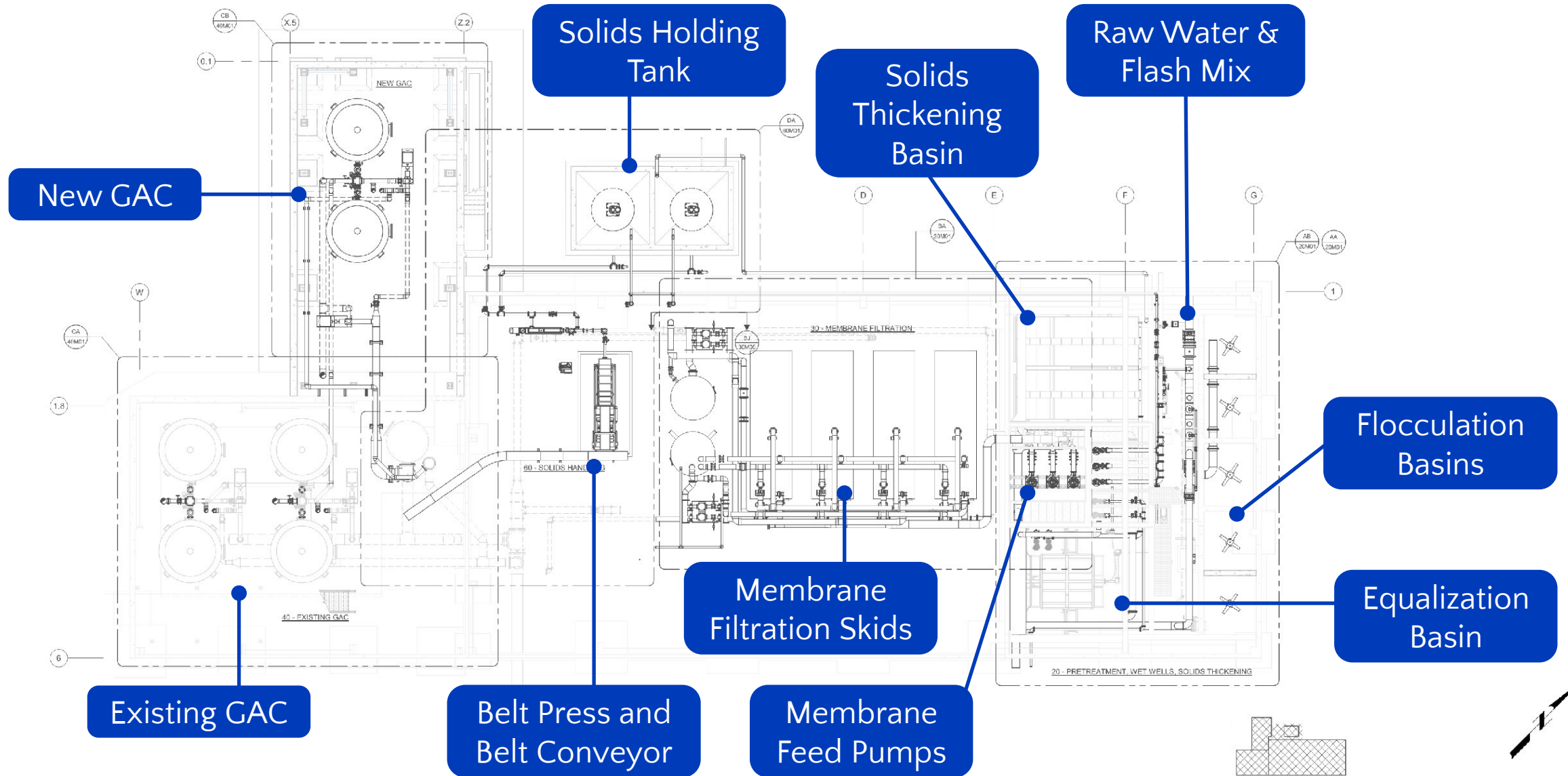
—
Several innovations to increase plant performance and reduce costs were tested full-scale during design

- Optimized chemical addition eliminated the need for sedimentation
- Ineffective sedimentation was re-purposed for residual handling
- An additional low-cost TOC removal tool reduced GAC costs

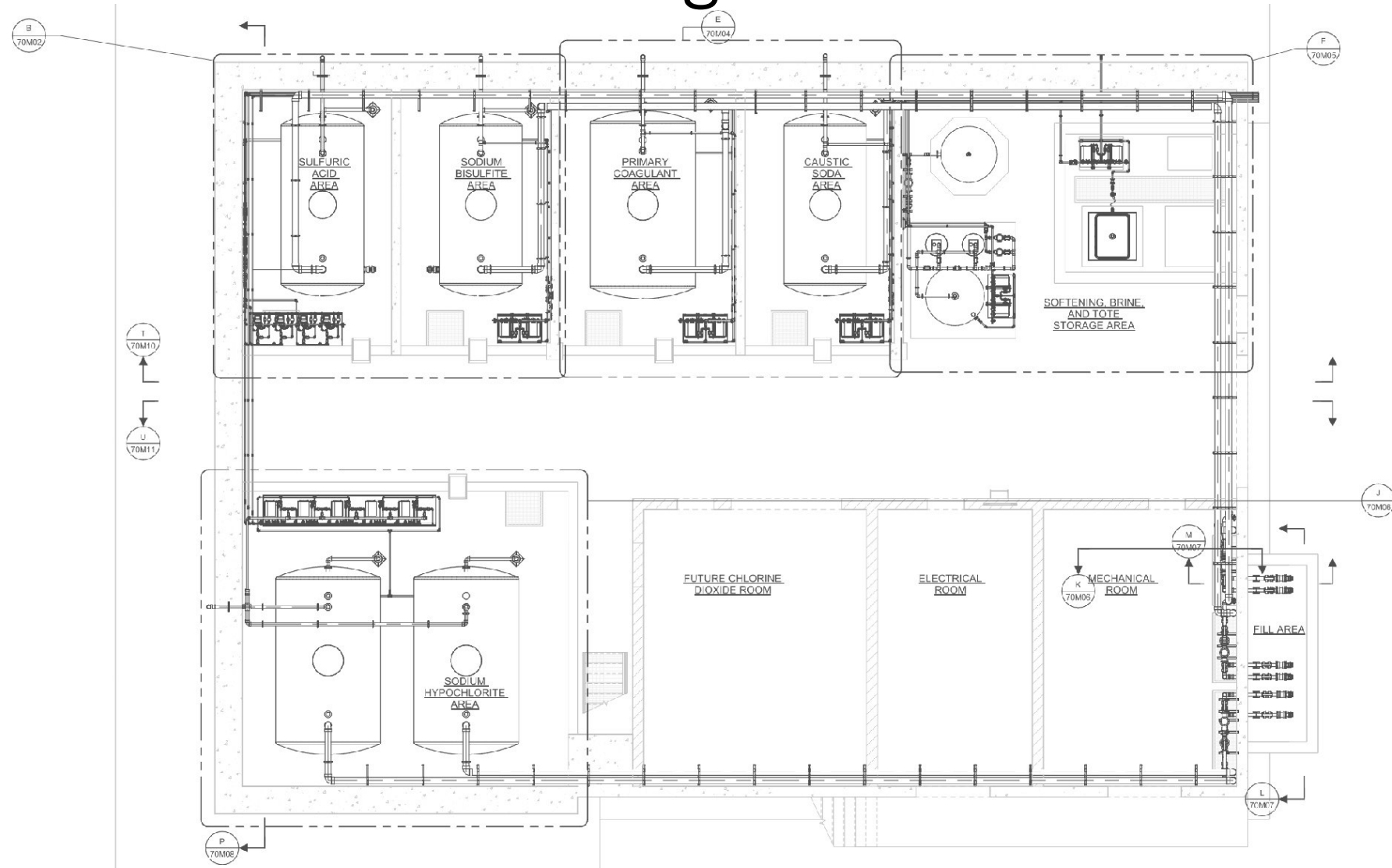
The project includes several major elements



We are modifying every area of the existing building



New Chemical Building provides safer and more effective chemical storage and feed



—
Federal and state funding is critical to success

Total Project Costs	WIFIA Loan	SRF Loan	Mountain Regional Water
\$50 M	\$38 M	\$2 M	\$10 M

The project is on schedule for completion by Fall 2028

